



Offline Series by BEST

Heavy-duty, stand-alone access control.

BEST's Offline Series delivers robust, efficient, integrated access control. The self-contained cylindrical, mortise, or exit trim locks are battery powered and can be virtually reconfigured, with access and time parameters set at the lock for higher security. Offline Series locks work with Lenel OnGuard and Keyscan Aurora software systems, giving users with existing software more options for upgrade and retrofit applications as well as offering a choice for new users. Designed with powerful hardware for up to 5,000 users and/or events, the Offline Series offers maximum security and flexibility.

Versatile, simple and effective.

Modern technology and a sensible design to meet your access control needs. The system integrates with virtually any existing database, and allows unsurpassed capabilities in storing and retrieving access activity data. And because the locks are offline, individual door access changes can be made quickly and conveniently.

- **Integrated access control.** BEST's Offline Series integrates card reader hardware at the lockset without costly wire runs or complicated frameworks.
- **Robust platform.** Each Offline Series lock tracks up to 5,000 users and/or events at the lock. We designed the Offline Series to work with two types of software—Lenel OnGuard or Keyscan Aurora— to reduce the inefficiency of redundant systems and offer users more choice.
- **Stand-alone management.** The locks are self-contained and battery powered, and can be configured and reconfigured individually with pre-enrolled cards.



Simple to manage and maintain, BEST's Offline Series delivers robust, stand-alone access control.

Convenient, efficient access control.

Save time and resources with BEST's Offline Series—a self-contained access control solution that makes installation, maintenance, and management faster and easier. With the Offline Series, you won't need wire runs or complex setups. Designed for quick setup and reconfiguring, equipped with easily replaceable component parts for longer product life, and able to dynamically integrate information with existing databases, the Offline Series makes robust access control simple.

Offline Series Specifications		Features	
Certifications	ANSI/BHMA A156.2 Grade 1 cylindrical lock ANSI/BHMA A156.5 Grade 1 cylinder and input devices ANSI/BHMA A156.3 Grade 1 panic hardware ANSI/BHMA A156.13 Grade 1 mortise lock ANSI/BHMA A156.25 compliant with proximity and magstripe readers UL 10C listed for electrically controlled single point locks and latches for use on 3-hour A-label doors	US FCC Part 15 Class A and Canadian IC EMC listed Florida Building Code Windstorm listed ANSI/ICC A117.1 Accessible and Usable Building and ADA Operable parts shall be operable with one hand and shall not require tight grasping, pinching, or twisting of the wrist.	BEST Offline Series <ul style="list-style-type: none"> Component options. BEST's Offline Series is available in cylindrical, mortise, and exit trim lockset options with magnetic stripe, proximity, smart card, or dual validation readers (magstripe + keypad). Virtual locksmith. Reconfigure Offline Series locks easily by reissuing cards for individual locks. Heavy-duty performance. Offline Series locks perform in the toughest applications thanks to heavy-duty construction. Easy maintenance. All Offline Series locks are designed with easily replaceable component parts for easier maintenance and longer product life. Simple programming. Offline Series locks do not require a proprietary programming device. V Series available reader offerings: Magnetic Stripe, Magnetic Stripe + Keypad, 125 kHz Proximity, 13.56 MHz Smart Card, Proximity+Keypad G Series available reader offerings: Magnetic Stripe, Magnetic Stripe + Keypad
9KG/9KBV Specifications	Internal materials: Brass, zinc, corrosion-treated steel Chassis: 2 1/16" diameter, fits 2 1/8" diameter hole in door Strike: Brass, bronze or stainless steel; standard 2 3/4" x 1 1/8" x 3/32" or ANSI 4 7/8" x 1 1/4" x 3/32" Backset: 2 3/4" standard, 3 3/4" and 5" available	Door thickness: 1 3/4" – 2 1/4" Installation: Modified door prep required—ANSI A156.2 Series 4000, Grade 1 Latchbolt: 9/16" (3/4" throw optional) Escutcheon: 10 1/2" x 3 3/8" x 1" sloping to 3/4" Lever handle: High-quality zinc alloy	
40HG/40HBV Specifications	Case: 0.095" cold rolled steel, plated with zinc dichromate for corrosion protection; 5 7/8" x 7 7/8" x 4 1/16" Faceplate: Brass or bronze, automatically adjusts to proper bevel at installation; 8" x 1 1/4" x 1/16" Strike: Brass, bronze, or stainless steel; universal non-handed strike supplied standard; fits standard door prep; 4 7/8" x 1 1/4" x 3/32" Backset: 2 3/4"	Door thickness: Standard 1 3/4"; available up to 3" thick (specify when ordering) Latchbolt: Solid stainless steel; 3/4" anti-friction throw; reversible without opening case Deadbolt: Stainless steel, 1" throw Auxiliary bolt: Stainless steel, non-handed Lever handle: Brass, bronze, or stainless steel Escutcheon: 10 1/2" x 3 3/8" x 1" sloping to 3/4"	
EXG/EXBV Specifications	Internal materials: Brass, zinc, corrosion-treated steel Minimum stile width: Mortise and rim locking types 4 3/4" surface; concealed vertical locking rod type 3 3/4"	Escutcheon: 11 5/8" x 3 3/8" x 1" Lever handle: Brass or bronze	
Keying	9KBV/9KG Standard: SFIC 7/6 pin Non-IC prep available for: Corbin, Medeco, Sargent, Schlage, and Yale LFIC prep available for: Corbin, Sargent, Schlage, and Yale	40HG/40HBV/EXG/EXBV Standard: Best Cylinder Housing* <small>*Can be ordered to accept another manufacturer's core housing.</small>	
9KG/9KBV Functions	Cylindrical latch with key override (DV)		
40HG/40HBV Functions	Deadbolt with key override (TV) Deadbolt without key override (LV)	Latch with key override (DV) Latch without key override (NV)	
EXG/EXBV Functions	With key override (EV)	Without key override (NV)	
All Finishes	ALL 606: Satin Brass 626: Satin Chrome 690: Dark Bronze Coated 630AM UltraShield™ antimicrobial coating available	40HG/40HBV 605: Bright Brass 611: Bright Bronze 612: Satin Bronze 613: Oil-rubbed Bronze 625: Bright Chrome 629: Bright Stainless Steel 630: Satin Stainless Steel	9KG/9KBV 605: Bright Brass 612: Satin Bronze 625: Bright Chrome EXG/EXBV 613: Oil-rubbed Bronze
Warranties	Three year product warranty Three year finish warranty (613 carries no finish warranty)		

Featured Finishes



605 Bright Brass



606 Satin Brass



612 Satin Bronze



613 Oil-rubbed Bronze



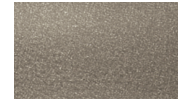
625 Bright Chrome



626 Satin Chrome



630 Satin Stainless Steel



690 Dark Bronze Coated

BA-0272 08/21

For questions about ordering and to be sure you get the right configuration for your needs, [contact your BEST dormakaba sales representative](#).
6161 East 75th Street, Indianapolis, IN 46250 USA | [855-365-2407](tel:855-365-2407) | bestaccess.com